



Seiko 6430A Movement Parts (1)

Compiled by EmmyWatch - <https://www.emmywatch.com>

SEIKO

QUARTZ

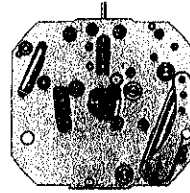
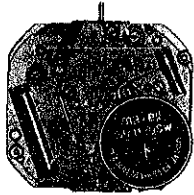
Cal. 6430A

EMMYWATCH

VINTAGE RESTORATIONS

**PARTS
CATALOGUE**

Cal. 6430A



122 642



125 630



126 640



221 644



231 650



241 643



261 650



271 644



281 640



282 946



354 641



383 641



394 641



386 641



391 641



491 546



701 650



766 640



4001 541



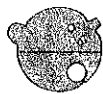
4002 642



4050 642



4146 650



4216 642



4239 642



4259 641



4270 640



4271 641



4408 633



4408 634



☆ Maxell SR1120SW



022 411

2/1

Cal. 6430A

Characteristics

Casing diameter : ϕ 24.0 mm
 Maximum height : 2.4 mm
 Jewels : 7 j
 Frequency of quartz crystal oscillator : 32,768 Hz (Hz=Hertz Cycles per second)
 Driving system : Step motor (2 poles)
 Regulation system : Trimmer condenser

PART NO.	PART NAME	PART NO.	PART NAME
122 642	Center wheel bridge	☆027 092	Tube for train wheel bridge (A)
125 630	Train wheel bridge	☆027 093	Tube for train wheel bridge (B)
126 640	Additional train wheel bridge	☆027 095	Tube for train wheel bridge (C)
221 644	Center wheel & pinion	☆027 095	Tube for circuit block screw (A)
231 650	Third wheel & pinion	☆027 098	Tube for setting lever spring screw (A)
241 643	Fourth wheel & pinion	☆027 099	Tube for setting lever spring screw (B)
261 650	Minute wheel	027 716	Train wheel setting lever adjusting pin
271 644	Hour wheel	027 717	Battery connection (+) pin
281 640	Setting wheel	027 891	Setting lever pin
282 946	Clutch wheel	027 957	Eccentric dial pin
354 641	Winding stem	☆ Maxell SR1120SW	Silver oxide battery
383 641	Setting lever	☆ U.C.C. 381	
384 641	Yoke (Clutch lever)	☆ SEIKO TP-120SW	Silver (II) oxide battery
386 641	Setting lever spring	☆ SEIKO SB-DS	
391 641	Train wheel setting lever		
491 546	Dial washer		
701 650	Fifth wheel & pinion		
766 640	Intermediate minute wheel		
4001 541	Circuit block		
4002 642	Coil block		
4050 642	Circuit bridge plate		
4146 650	Step rotor		
4216 642	Insulator for battery		
4239 642	Rotor stator		
4259 641	Anti-magnetic shield plate (A)		
4270 640	Battery connection (---)		
4271 641	Battery connection (+)		
4408 633	Spacer for setting lever spring		
4408 634	Circuit block spacer		
022 411	Train wheel bridge screw		
022 411	Circuit block screw		
022 411	Battery connection (+) screw		
022 411	Setting lever spring screw		
011 503	Upper hole jewel for fourth wheel		
011 547	Upper hole jewel for third wheel		
011 547	Lower hole jewel for third wheel		
011 547	Upper hole jewel for fifth wheel		
011 547	Lower hole jewel for fifth wheel		
011 552	Upper hole jewel for step rotor		
011 552	Lower hole jewel for step rotor		
023 384	Yoke pin		
023 384	Guide pin for setting lever spring		
023 856	Yoke banking pin		
☆027 065	Tube for circuit block screw (C)		
027 066	Tube for battery connection (+) screw		
☆027 067	Tube for circuit block screw (B)		

☆ ⇨ Please see remarks on the reverse page.
 Part numbers in light letters are not shown in photos.

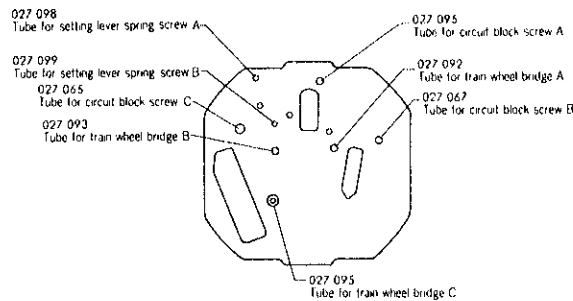
Cal. 6430A

Remarks :

Tube for circuit block screw (A, B, C), Tube for train wheel bridge (A, B, C), Tube for setting lever spring screw (A, B).

- ☆027 065
- ☆027 067
- ☆027 092
- ☆027 093
- ☆027 095
- ☆027 098
- ☆027 099

Refer to the illustration below for the position of Tube for circuit block screw (A, B, C), Tube for train wheel bridge (A, B, C), Tube for setting lever spring screw (A, B).



Battery

- ☆Maxell SR1120SW
- ☆U.C.C. 381
- ☆SEIKO TR1120SW
- ☆SEIKO SB-DS

The substitutive battery might be added to the applied battery in the future. In that case, please refer to separate "BATTERY LIST FOR SEIKO QUARTZ WATCHES". Note that SEIKO battery is marked with "SEIZAIKEN" on its (+) side.

SEIKO VINTAGE RESTORATIONS