



## Miyota 6P50 Movement Parts (1)

*Compiled by EmmyWatch - <https://www.emmywatch.com>*

6P50

MOVEMENT SPECIFICATIONS  
CAL. 6P50 BY CITIZEN WATCH CO., LTD.  
10-1/2 LIGNE QUARTZ, 0 JEWEL

## 1. BASIC SPECIFICATIONS

## (1) Cal. No.

	6P50
Size	φ23.7 X 22.6 X 22.6
Total thickness (Max.)	3.5 mm
Hands	4 Date/Hour/Minute/Second
Moon phase	○
Battery life	Approx. 2 years

## (2) Time standard

Type of oscillation : Tuning fork type quartz crystal  
Oscillation : 32,768 Hz  
Accuracy : ±20 sec/month  
under normal circumstances

## (3) Battery

Type of Battery : Silver Oxide SR621SW or equivalent  
6.8φ X 2.1 Voltage : 1.55V

## (4) Others

Driving systems : Bipolar step motor  
Jewel : 0 Jewel

## (5) Balanceable weight of hands

Minute hand : Max. 30 mg - mm  
Second hand : Max. 7 mg - mm

6P50

## (6) Additional Mechanisms

- Calendar : Date (Center, clockwise)  
Month (3 o'clock position, clockwise)  
Day (9 o'clock position, clockwise)
- Date correction : Pull out the crown to the first click
- Day correction : Pull out the crown to the second click
- Month correction : Push button
- Picture dial : Moon phase (Age of the moon dial rotating one turn every 59 days  $\phi$  10.1 mm)
- Correction by pulling out the crown to the first click (clockwise)
- Power conservation switch : Pull out the crown to the second click
- Second hand stopping device : Pull out the crown to the second click

EMMYWATCH  
VINTAGE RESTORATIONS

6P50

## 2. SHIPPING FORM

Separated parts : Setting stem X 1 : 065-379

Remark :

Setting stem (065-379)

Length of movement center to stem end : 20.03 mm  
Thread : 0.9 $\phi$  mm X 12.18 mm

## 3. OTHERS

\* Measurement of time rate

The unit time of measurement must be set at "10 sec." or an integer-fold value of 10 sec. owing to the DFC system. And the measurement must be carried out in a state of a complete watch.

\* Marking on movement

MIYOTA CO. UNADJUSTED  
NO JEWEL JAPAN 6P50

\* Typical clearance

Between case and movement

Battery strap - Case back : Typical 150  $\mu$ Hand - Glass : 300 ~ 450  $\mu$   
Depend on Head length

## 4. NOTICE OF CASING

- (1) The month corrector button should be hidden for preventing the error of action.
- (2) The returning pressure of the month corrector button should be Min. 200 g
- (3) The interval between Dial and Glass end should be 150 $\mu$  to avoid breakage under drop.

This specification might be changed without the previous notice.

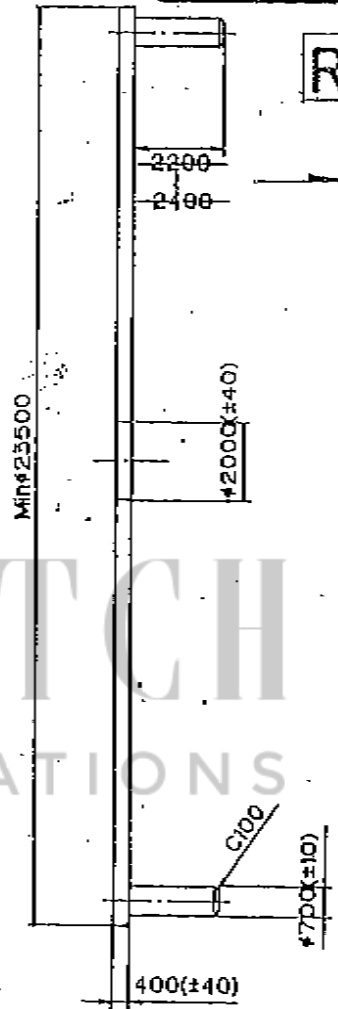
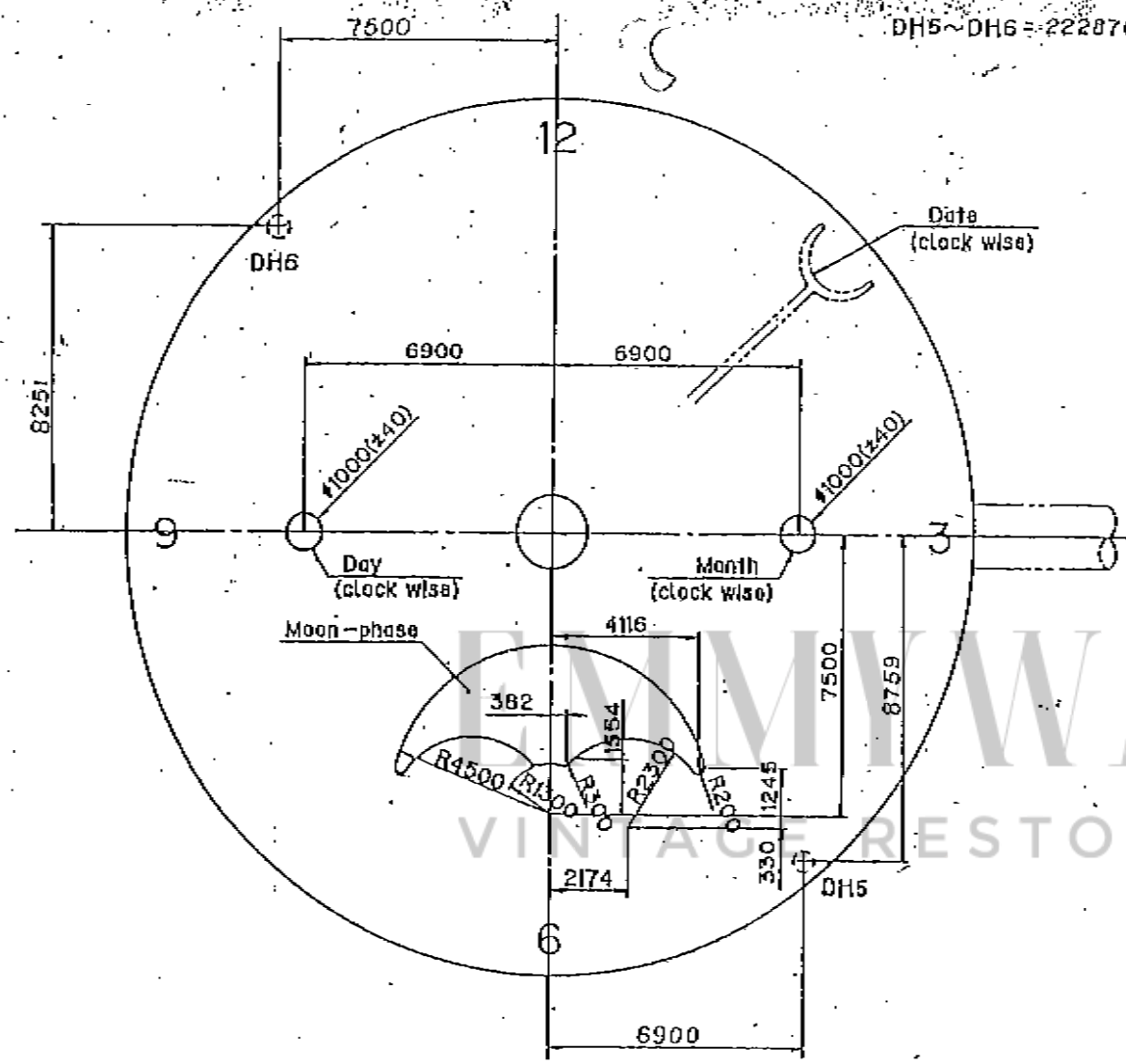
# CaL 6P50

DH5~DH6 = 22287(±20)

**REVISED (修改)**

**1800~2000**

21 JUL 1993



**2/4**



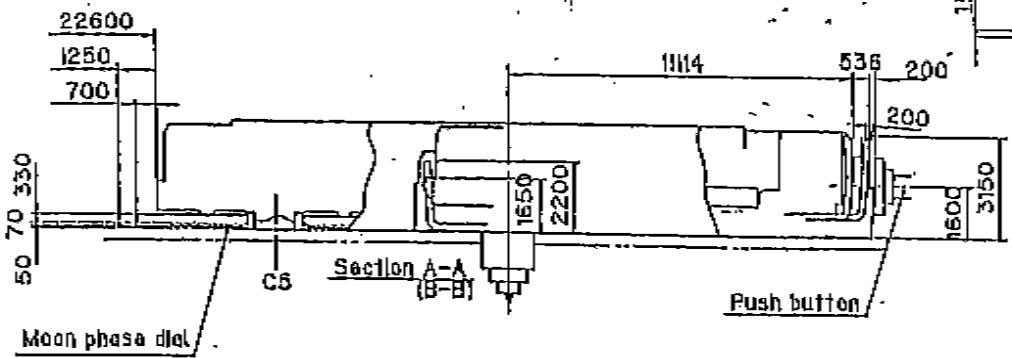
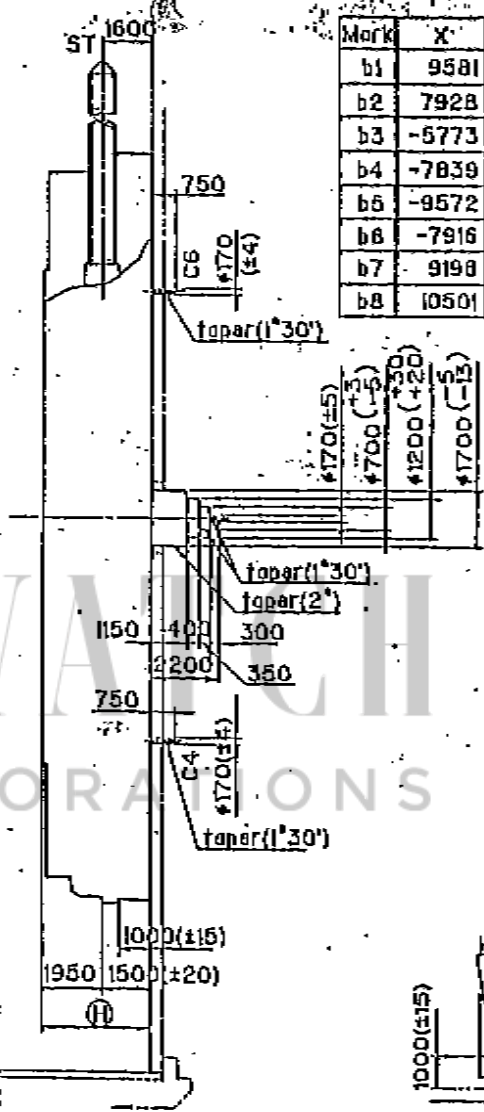
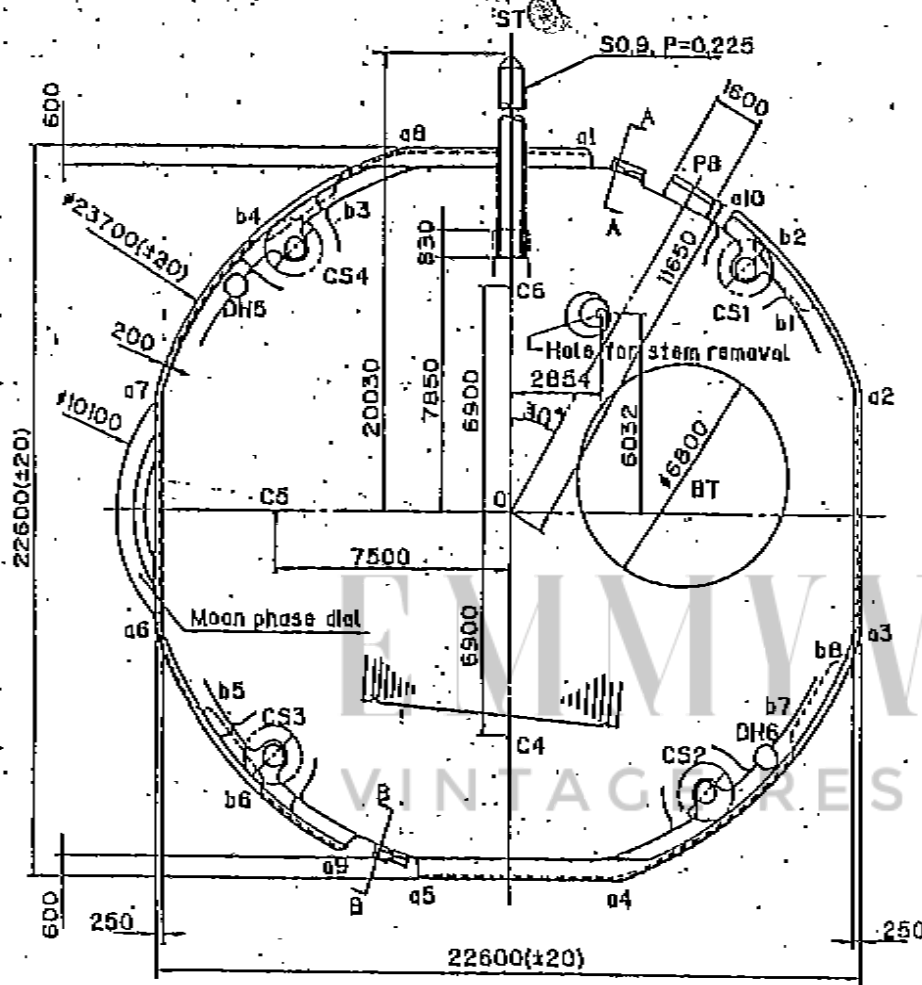
**CITIZEN WATCH CO., LTD.**

			Unit	1/1000mm	Name
			Scale		DIAL
			Quantity		
			Material		CAL. NO.
			Heat		6P50
Mark	Date	Description	Appro	Treatment	
		Alterations		Hardness	
	Date	Name		Plating	
Drawn			General tolerances		
Checked			Dimensions		
Approved			Angles		

8. DEC. 2011 19:13

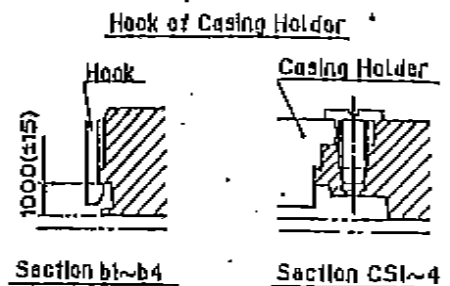
NO. 879 P. 4

DH5~DH6 = 22287(±20)



			Mark Coordinates			
Mark	X	Y	R	Mark	X	Y
b1	9581	6360	150	DH5	-8759	6900
b2	7928	8331	150	DH6	8261	-7500
b3	-5773	9948	150	BT	5500	1100
b4	-7839	8415	150			
b5	-9572	-6374	150	a1	2351	11100
b6	-7916	-8342	150	a2	10800	3490
b7	9198	-6908	150	a3	10800	-3490
b8	10501	-4890	150	a4	3490	-10800
				a5	-2700	-11100
				a6	-10800	-3490
				a7	-10800	3490
				a8	-3490	10800
				a9	-5389	-10216
				a10	7235	9131
				CS1	7531	7531
				CS2	6273	-8607
				CS3	-7531	-7531
				CS4	-6886	8125

With Battery strap	3600
Without Battery strap	3450



Unit	1/1000mm	Name :
Scale		Frame for Co
Quantity		CAL. NO. :
Material		6P50 1/2
Heat		
Treatment		
Hardness		
Plating		
General tolerances		
Dimensions		

8 DEC 2011 19:13:50  
NO. 879  
P. 5