



## Miyota 6N00 Movement Parts (1)

*Compiled by EmmyWatch - <https://www.emmywatch.com>*

MOVEMENT SPECIFICATIONS  
CAL. 6NXX BY CITIZEN WATCH CO., LTD. JAPAN  
WITH ELECTRO-LUMINESCENT UNIT  
13 LIGNE QUARTZ . NO (O) JEWEL

## 1. BASIC SPECIFICATIONS

## (1) CAL. NO.

	6N30	6N10	6N00
Size (mm)	28.80 $\Phi$		
Total thickness	3.55 (mm) *1.	4.30 (mm) *1.	
Hands	3		
Date	×	○	○
Day	×	×	○
Battery life	Approx. 2 years *2.		

- 9 JUN 1985

\*1. Including dial.

\*2. Two years for customer's normal use based upon  
5 sec/day for E/L (Electro-Luminescent unit).

## (2) Time standard

Type of oscillator: Tuning fork type quartz crystal  
 Oscillator : 32,768 Hz  
 Accuracy :  $\pm 20$  sec/month under normal circumstances

## (3) Battery

Type of battery : Silver oxide SR621W or equivalent

## (4) Others

Driving systems : Two-pole stepping motor  
 Jewel : No jewels

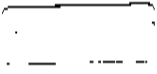
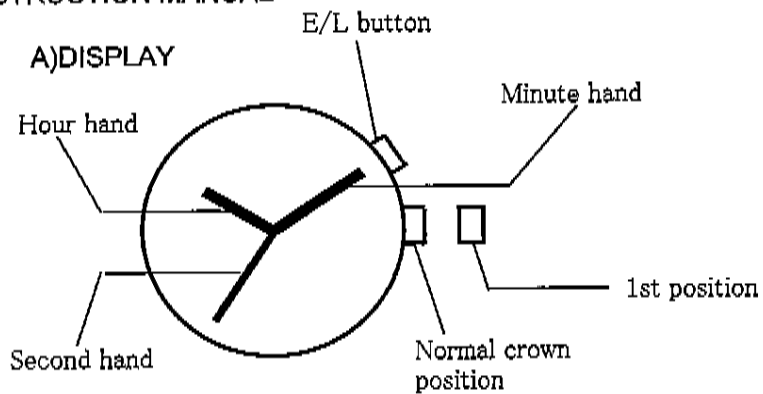
## (5) Additional mechanisms

Second hand stopping at optional position  
 Power conservation switch

## (6) Balanceable weight of hands

Minute hand	Max. 40 mg-mm
Second hand	Max. 7 mg-mm

Note: Please make sure to use transparent dial (which is supplied with mov't) over the E/L plate on mov't, and please never print directly on the E/L plate, as the printing directly on E/L plate may infringe the third party's patent.

**INSTRUCTION MANUAL FOR MIYOTA WATCH MOVEMENT****INSTRUCTION MANUAL****B) SETTING THE TIME**

1. Pull the crown out to the 1st position.
2. Turn the crown to set hour and minute hands.
3. When the crown is pushed back to the normal position, second hand begins to run.

**C) OPERATING E/L (ELECTROLUMINESCENT) UNIT**

1. Press the E/L button and the E/L turns on.
2. E/L unit automatically turns off 1second after the button is released.

## 2. SEPARATED PARTS

Setting stem (x 1)	065 - 379
Transparent dial(x 1)	311 - 010 (6N10)
	311 - 030 (6N30)
	311 - 070 (6N00)

## (1) Setting stem

065 - 379

Length of movement center to stem end --- 20.03 mm

Thread ..... 0.9Φmm × 12.18 mm

## (2) Transparent dial

311 - 010 (6N10)

311 - 030 (6N30)

311 - 070 (6N00)

Any of customer's Logo, Brand name, Marks and index etc. must be printed on the Transparent dial. Due to the potential infringement of E/L patent, never print directly on the surface of Electro-Luminescent plate.

## 3. Measurement of time rate

The unit of measurement must be set at "10 sec." or an integer-fold value of 10 sec. owing to the DFC system. And the measurement must be carried out in a state of a complete watch.

## 4. Marking on movement

EMMY WATCH  
VINTAGE RESTORATIONS  
UNADJUSTED NO JEWELS  
SNXX  
MIYOTA CO. JAPAN

## 5. Typical clearance

Between case and movement

Battery strap - Case back : Typical 150 μ (without battery strap)  
Hand - glass : 300 μ ~ 450 μ  
Depend on Hand length

## 6. Operating of Electroluminescent (E/L) Unit



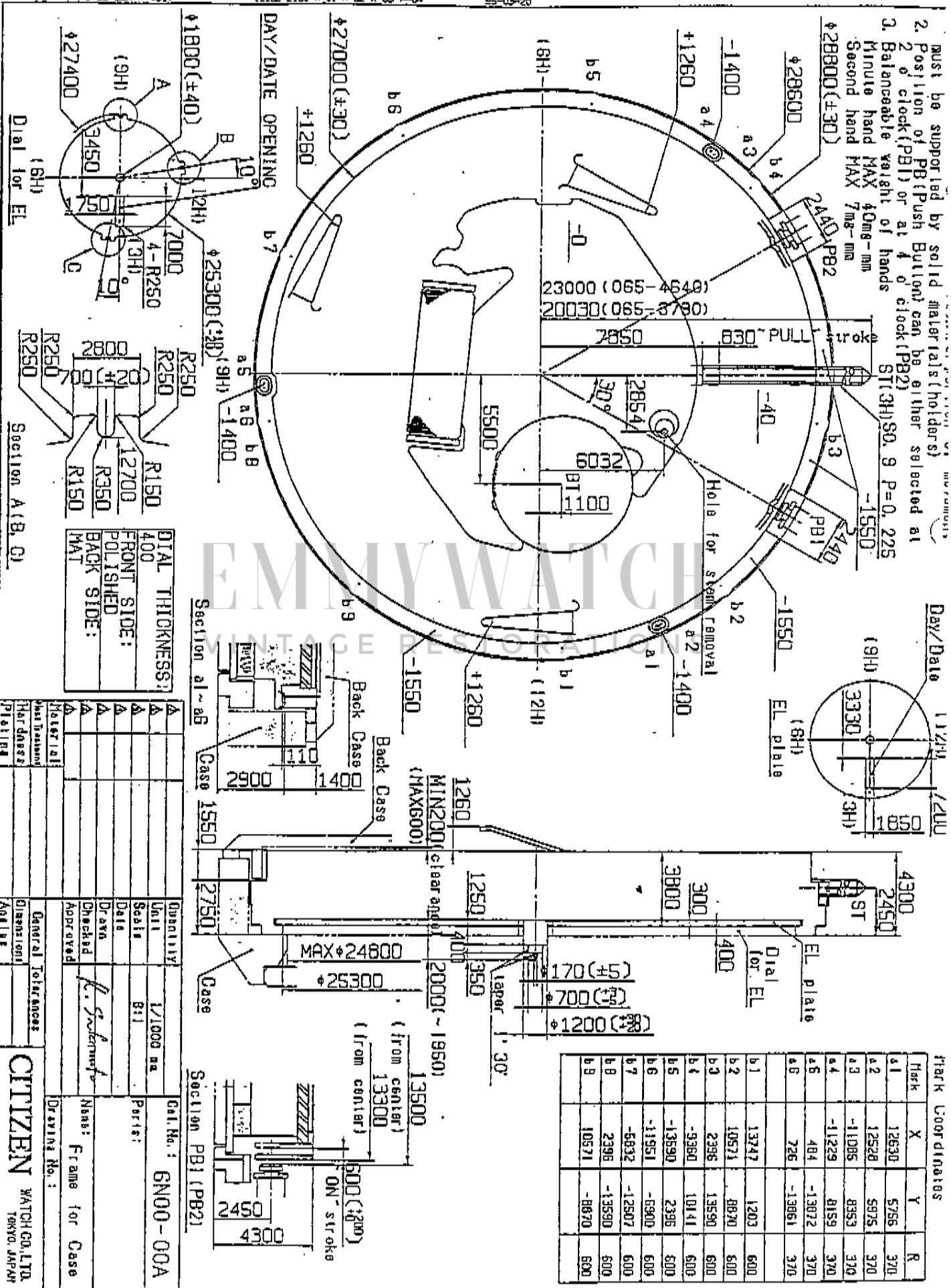
P.B.1

1. Depress P.B.1 to E/L on.
2. E/L Unit auto-matically turned off 1 sec after PB 1 was released.

Note: The position of PB(push button) can be set either at 2 o'clock or at 4 o'clock.

※ The specifications might be changed without previous notice.

This drawing is provisional and subject to our reconfirmation and/or revision without notice



1. Must be supported by solid materials (holders)
2. Position of PB (Push Button) can be either selected at 2 o'clock (PB1) or at 4 o'clock (PB2)
3. Balance hand MAX 40mg - mm  
Second hand MAX 7mg - mm
4.  $\pm 28800 (\pm 30)$
5.  $\pm 28500$
6.  $-1400$
7.  $+1260$
8.  $23000 (065-4649)$   
 $20030 (065-8790)$
9.  $8350$
10.  $630$  PULL stroke
11.  $-40$
12.  $-1550$
13.  $2440$  PB1
14.  $2440$  PB2
15.  $2300$  ST (3H) S0. 9 P=0. 225
16.  $3330$  (112H) EL. plate
17.  $1810$  (3H)
18.  $1810$  (3H)
19.  $4300$
20.  $2450$
21.  $300$
22.  $3800$
23.  $170 (\pm 5)$
24.  $700 (\pm 3)$
25.  $1200 (\pm 3)$
26.  $400$  Dial for EL
27.  $350$
28.  $30$
29.  $2000 (\sim 1950)$  clear angle
30.  $13500$  (from center)
31.  $13300$  (from center)
32.  $500 (\pm 20)$  ON stroke
33.  $2450$
34.  $4300$

Mark Coordinates

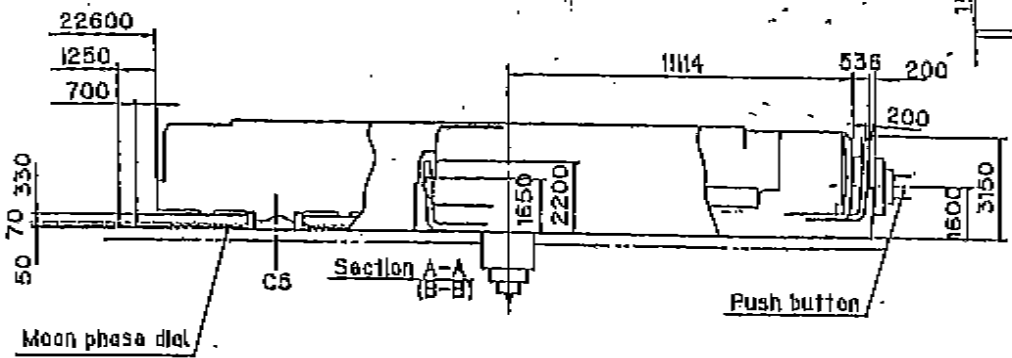
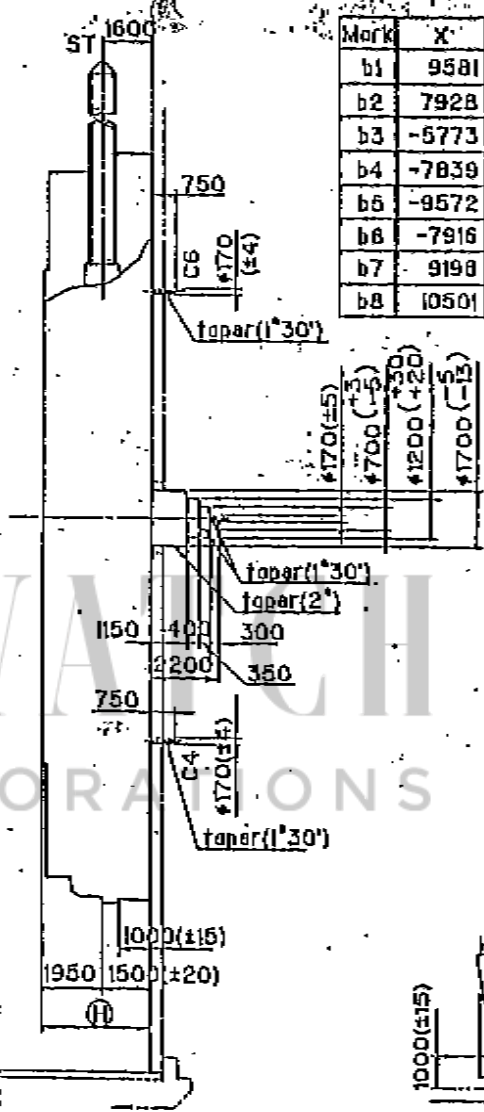
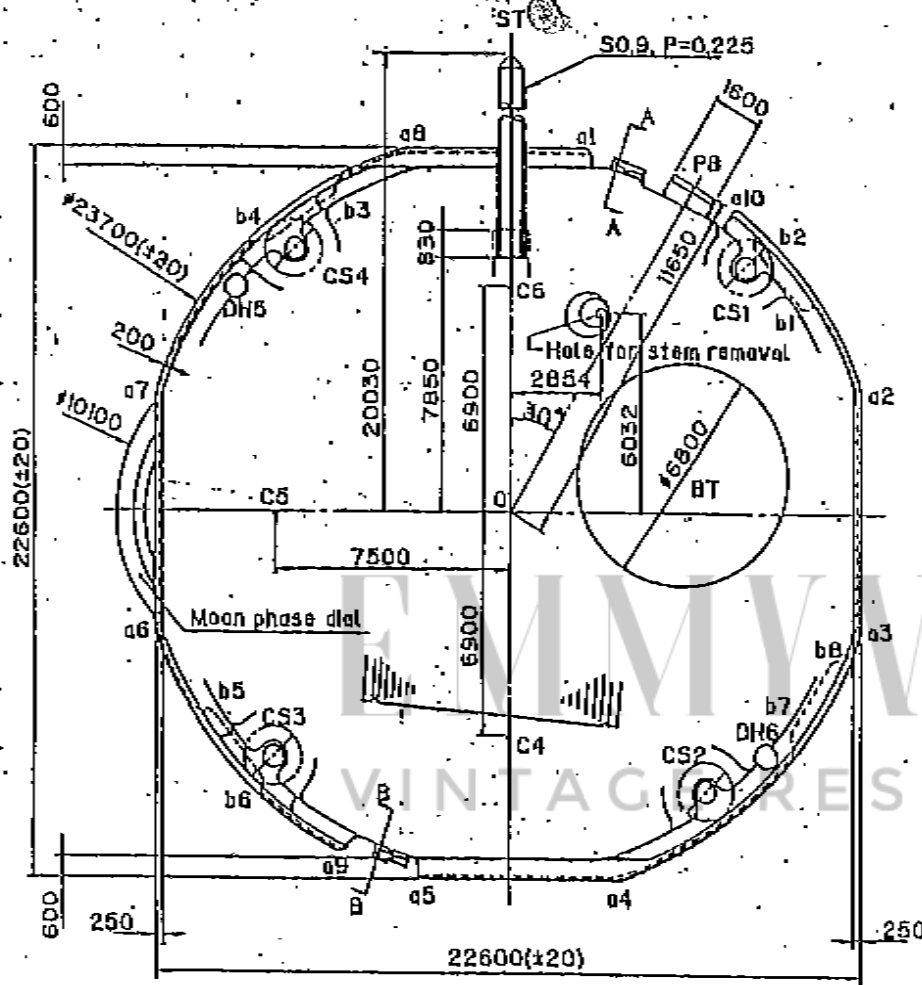
Mark	X	Y	R
a1	12630	5756	370
a2	12528	5975	370
a3	-11085	8353	370
a4	-11229	8159	370
a5	484	-13072	370
a6	726	-13061	370
b1	13747	1203	600
b2	10571	8970	600
b3	2395	13590	600
b4	-9360	10141	600
b5	-13590	2395	600
b6	-11951	-6900	600
b7	-6632	-12507	600
b8	2395	-13590	600
b9	10571	-8970	600

DIAL THICKNESS:	FRONT SIDE:	BACK SIDE:
400	400	400
400	400	400
400	400	400
400	400	400
400	400	400
400	400	400
400	400	400
400	400	400
400	400	400
400	400	400

Quantity	Unit	Scale	Date	Checked	Approved	General Tolerances	Dimension	Analys
1	1/1000 mm	B:1						
Name: <i>K. Suleymanov</i> Frame for Case Drawing No.:								

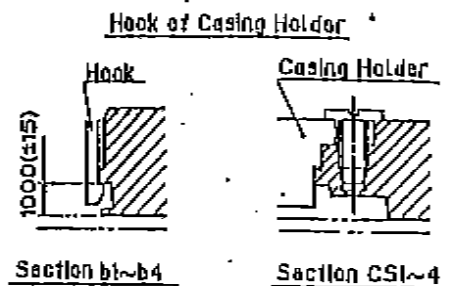
CITIZEN WATCH CO. LTD.  
 TOKYO, JAPAN

DH5~DH6 = 22287(±20)



Mark			Mark Coordinates		
Mark	X	Y	Mark	X	Y
b1	9581	6360	DH5	-8759	6900
b2	7928	8331	DH6	8261	-7500
b3	-5773	9948	BT	5500	1100
b4	-7839	8415			
b5	-9572	-6374	a1	2351	11100
b6	-7916	-8342	a2	10800	3490
b7	9198	-6908	a3	10800	-3490
b8	10501	-4890	a4	3490	-10800
			a5	-2700	-11100
			a6	-10800	-3490
			a7	-10800	3490
			a8	-3490	10800
			a9	-5389	-10216
			a10	7235	9131
			CS1	7531	7531
			CS2	6273	-8607
			CS3	-7531	-7531
			CS4	-6886	8125

With Battery strap	3600
Without Battery strap	3450



Unit	1/1000mm	Name :
Scale		Frame for Co
Quantity		CAL. NO. :
Material		6P50 1/2
Heat		
Treatment		
Hardness		
Plating		
General tolerances		
Dimensions		

8 DEC 2011 19:13:50  
NO. 879  
P. 5

