

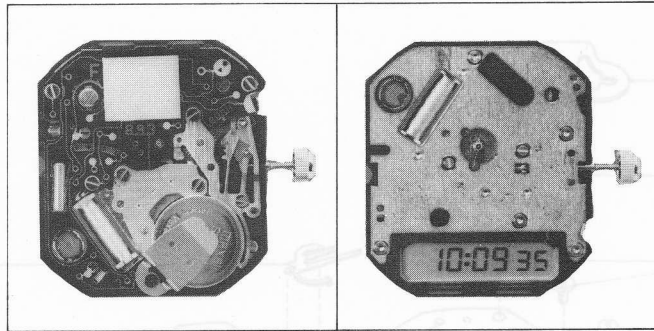


**EMMYWATCH**  
VINTAGE RESTORATIONS

Citizen 8930 Movement Parts (1)

*Compiled by EmmyWatch - <https://www.emmywatch.com>*

Catalog No. 893-1~893-2



893-1

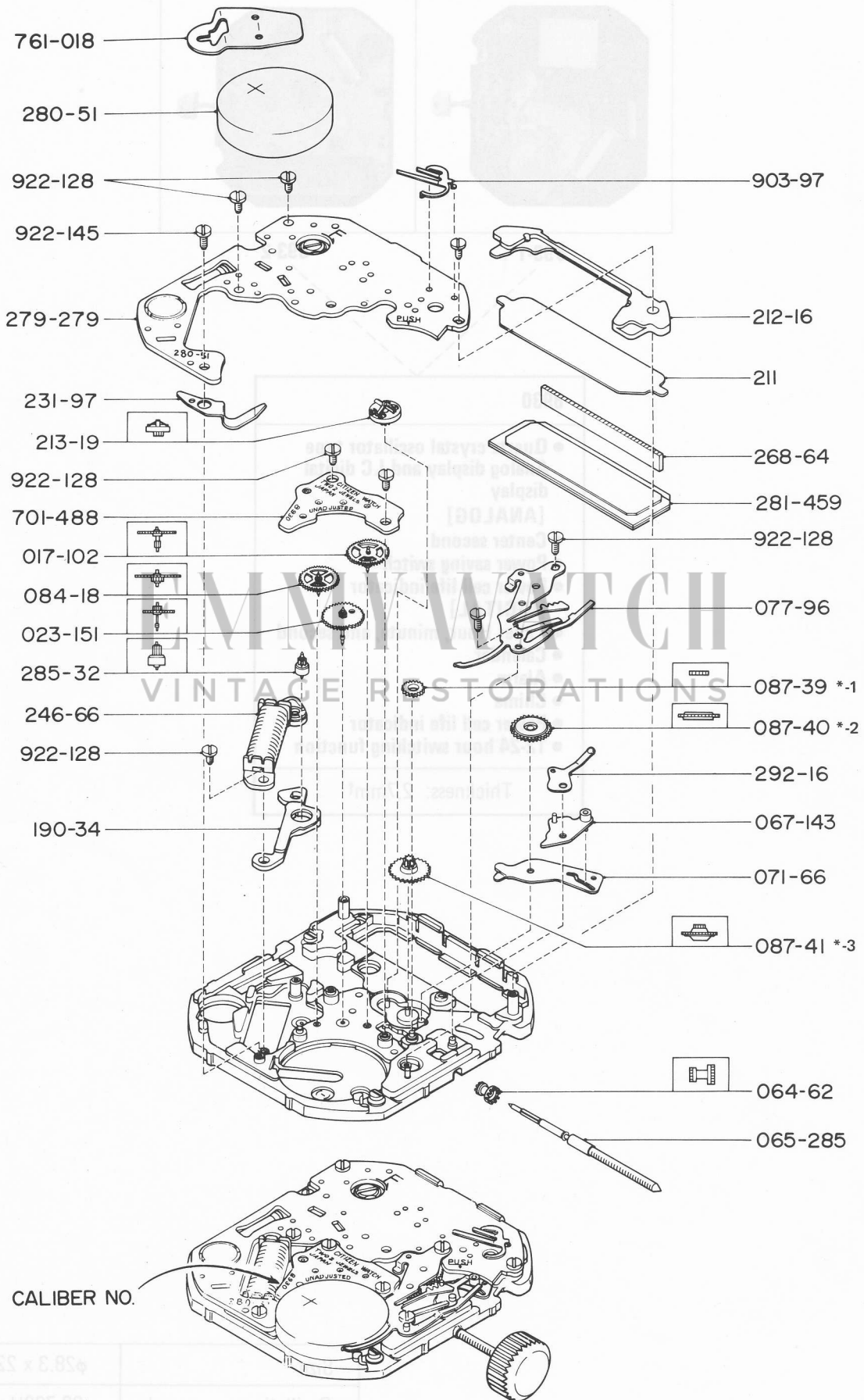
893-2

**8930**

- Quartz crystal oscillator type  
Analog display and LC digital display  
[ANALOG]
- Center second
- Power saving switch
- Power cell life indicator  
[DIGITAL]
- Time: Hour, minute, and second
- Calendar
- Alarm
- Chime
- Power cell life indicator
- 12-24 hour switching function

Thickness: 2.7mm<sup>t</sup>

Size	φ28.3 x 22 x 25mm
Oscillation per second	32,768Hz

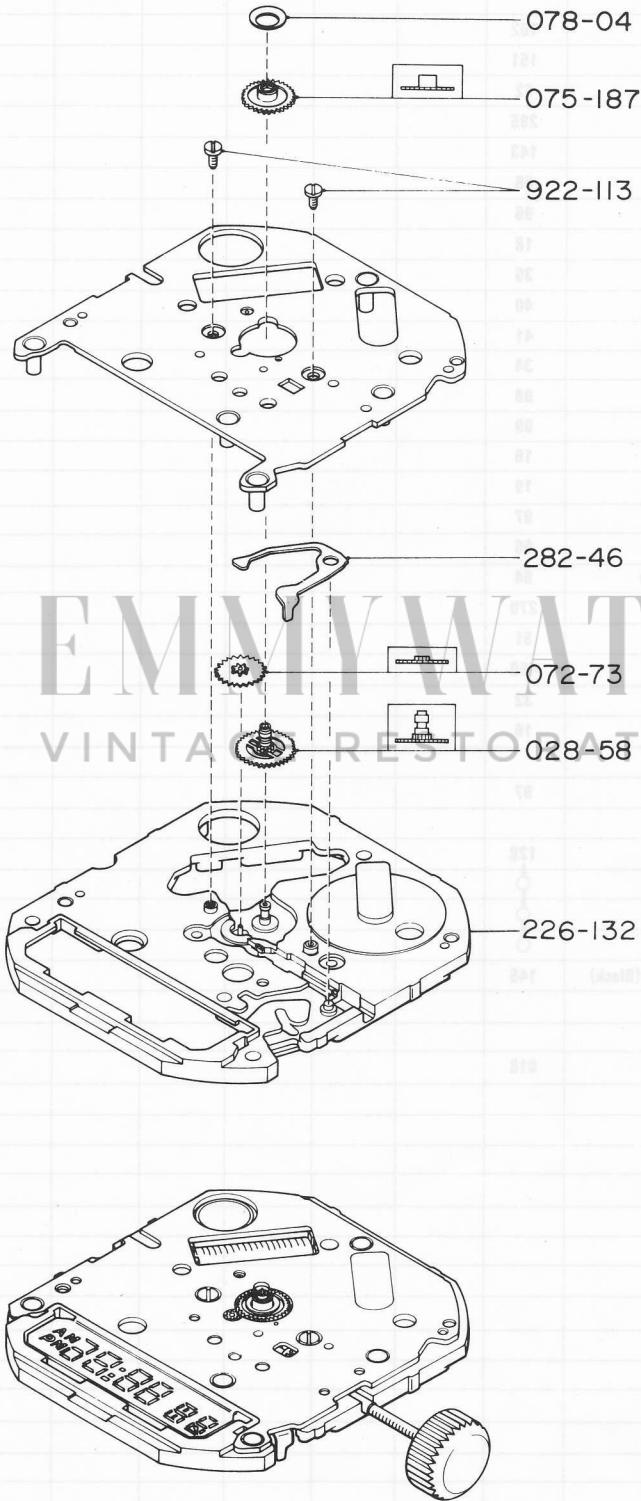


458.3 x 25 x 25mm	
32,768Hz	Oscillation per second

Catalog No. 893-1

Parts No.	Name of parts	Caliber No.	8930																	
		Nos. of jewels	02																	
701	Train wheel bridge	488																		
017	Third wheel and pinion	102																		
023	Fourth wheel and pinion	151																		
064	Clutch wheel	62																		
065	Setting stem	285																		
067	Setting lever	143																		
071	Yoke	66																		
077	Setting lever spring	96																		
084	Fifth wheel and pinion	18																		
*-1 087	Intermediate switch wheel [I]	39																		
*-2 087	Intermediate switch wheel [II]	40																		
*-3 087	Intermediate switch wheel [III]	41																		
190	Stator	34																		
★ 211	Reflecting plate (Silver)	98																		
★ 211	Reflecting plate (Gold)	99																		
212	Spacer for LC display panel	16																		
213	Switch wheel	19																		
231	Power cell connector spring	97																		
246	Coil unit	66																		
268	LC display panel connection rubber	64																		
279	Unit of electronic circuit	279																		
280	Power cell	51																		
281	LC display panel	459																		
285	Rotor	32																		
292	Switch lever	16																		
903	Buzzer contact spring	97																		
922	Screw for train wheel bridge	128																		
922	Screw for coil	○																		
922	Screw for setting lever spring	○																		
922	Screw for unit of electronic circuit	○																		
922	Screw for unit of electronic circuit (Black)	145																		
761	Power cell strap for checking	018																		

\*The parts No. 211 (Reflecting plate) is available in two different color, gold or silver, and thus the color you desire must be well confirmed.



EMMYWATCH  
VINTAGE RESTORATIONS

\*The parts No. 317 (Hacking plate) is available in two different colors, gold or silver, and thus the color you desire must be well confirmed.

